

# Additional Support

A range of apps and websites to help any child who might need additional support.



## **The Hertfordshire Local Offer**

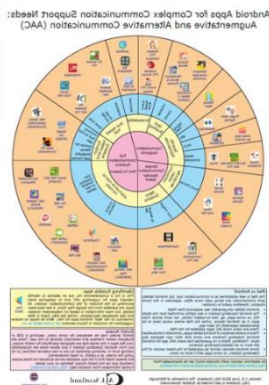
The Hertfordshire Local Offer has additional resources for parents to access during this period of time.

<https://www.hertfordshire.gov.uk/microsites/local-offer/the-hertfordshire-local-offer.aspx>

## **Twinkl**

Twinkl has a dedicated area for SEND support. This support includes additional resources and advice.

<https://www.twinkl.co.uk/resources/specialeducational-needs-sen>



## **Speech, Language and Communication Needs Support**

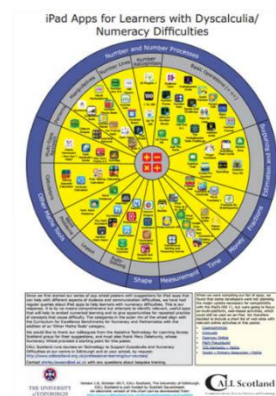
<https://www.callscotland.org.uk/downloads/posters-and-leaflets/android-apps-for-complex-communication-support-needs/>

<https://www.callscotland.org.uk/downloads/posters-and-leaflets/ipad-apps-for-complex-communication-support-needs/>

<https://www.hct.nhs.uk/our-services/childrens-speech-and-language-therapy/>

## **Dyscalculia/Numeracy Difficulties Support**

<https://www.callscotland.org.uk/downloads/posters-and-leaflets/ipad-apps-for-learners-with-dyscalculianumeracy-difficulties/>



## Dyslexic/Reading and Writing Difficulties Support

<https://www.callscotland.org.uk/downloads/posters-and-leaflets/android-apps-for-learners-with-dyslexia/>

<https://www.callscotland.org.uk/downloads/posters-and-leaflets/ipad-apps-for-learners-with-dyslexia/>

<https://www.bbc.co.uk/bitesize/topics/zf2f9j6/articles/z3c6tfr>

<https://www.cricksoft.com/uk/clicker/clicker-at-home>



## Range of additional needs

<https://www.callscotland.org.uk/downloads/posters-and-leaflets/ipad-apps-for-learners-with-complex-additional-support-needs/>



## Communication and Autism Team

To support children with communication and autism needs and their families during this unsettled period, the Specialist Advisory Teachers will be extending the hours of our telephone advice line from Monday 23<sup>rd</sup> March until the schools reopen.

It will be open **daily between 10am and 2pm (term time)** to provide advice and guidance for parents and carers.

If you wish to speak to a Specialist Advisory Teacher please call **01442 453920** during these times.

**Educational Psychology Service**

**ISL** Integrated Services for Learning  
*working together locally*

## Contactline UPDATE

**01992 588574**

Due to the current circumstances regarding the COVID-19 virus outbreak, we have expanded our 'quick queries' service across Hertfordshire.

From March 2020, Contact line will be available:  
**Monday to Friday from 2:00pm to 4:30pm**  
for all parents/caregivers, young people (aged 16 -25), school staff and professionals.



Please call if you would like to speak directly to an Educational Psychologist to discuss a child or young person's development, learning or emotional wellbeing, or to find out more about our service and the support we can offer.

Visit [www.hertfordshire.gov.uk/localoffer](http://www.hertfordshire.gov.uk/localoffer) for services for children/young people with SEND.

Find us on Twitter [@HertsEPS](https://twitter.com/HertsEPS) for frequent updates, support and advice during the COVID-19 outbreak.

**Hertfordshire**